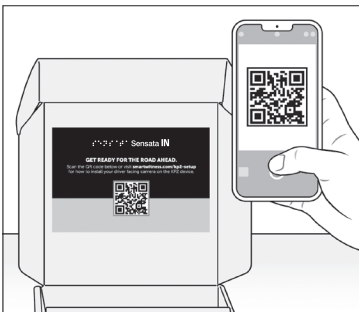
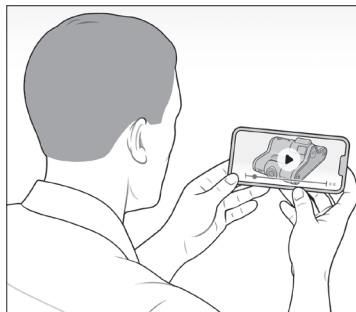


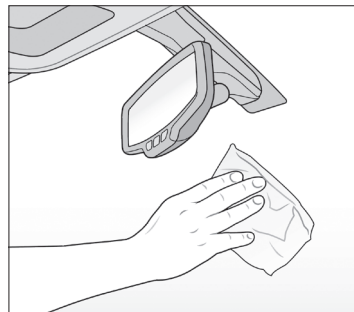
1. Review the package contents.



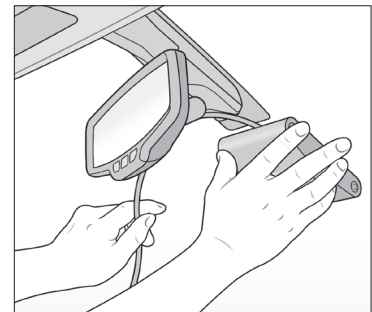
2. Scan the QR code inside the box for a detailed installation video, spec sheet and user guide.



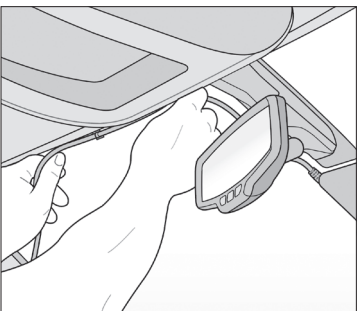
3. Watch the installation video. Refer to proper camera installation guidelines here. Device placement should be compliant with local regulations.



4. Use wipe to clean the window. Allow time to dry. Ensure the driver-facing camera is unobstructed and on a level angle with the driver's eyes and nose.



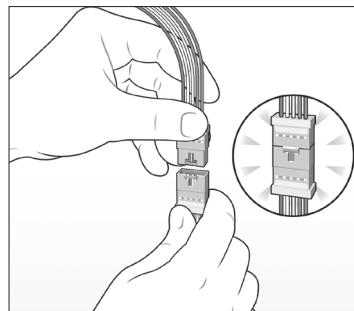
5. Remove backing. Press evenly to ensure the mounting bracket's adhesive is flush against the glass. Hold to window for 30 seconds.



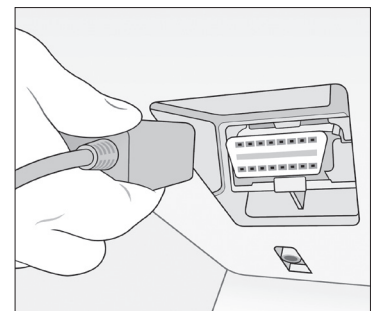
6. Remove adhesive and apply cable clips to windshield. Slide the bracket power cable into clips.



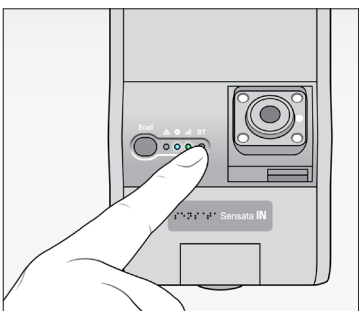
7. Tuck cable behind weatherstripping, and push stripping in to secure it.



8. At the end of the bracket cable (A), connect the terminal to the smaller end of the adapter cable (F).



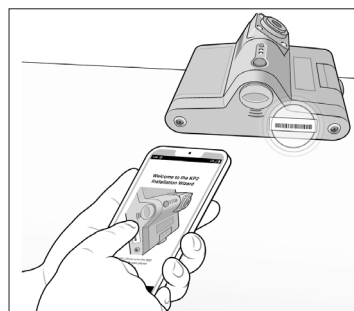
9. Plug end of OBDII adapter cable into vehicle's OBDII port. Ensure vehicle is on a flat surface for G-sensor and device calibration.



10. Start vehicle. Look for steady blue and green LEDs after 5 min. If they're off, there's an error. Press small black button for 3 sec to calibrate G-sensor; devices on older firmware may receive an audible alert.

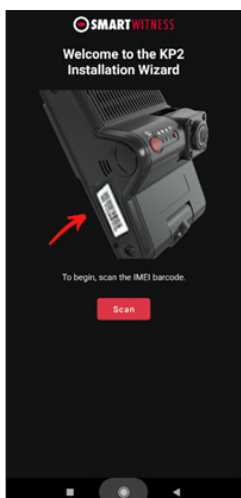


11. Scan the QR code above, and download the iOS or Android KP2 installation app.

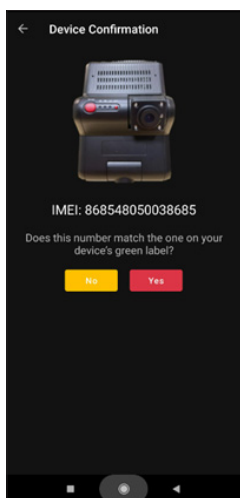


12. Open the KP2 Installation App, and scan the IMEI code on the device's label. Follow the prompts in the App to complete the process.

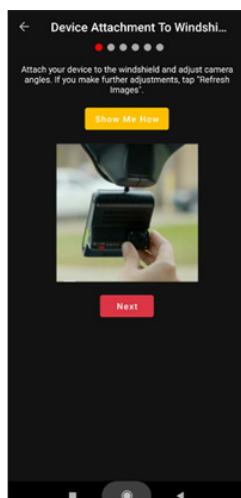
Proceed to next page for device calibration >



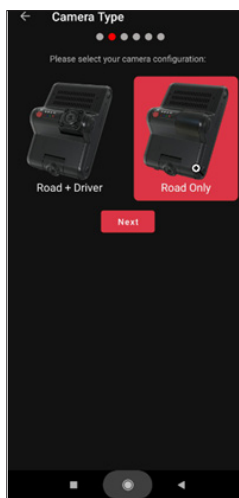
13. Launch the app and scan the green barcode to get started.



14. Ensure the IMEI from the scan matches your device's IMEI. Tap **YES** to continue.



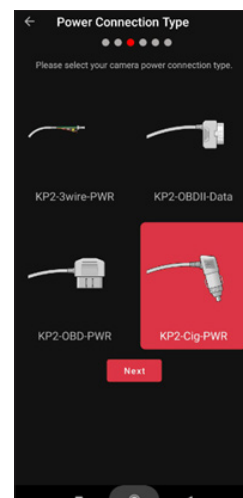
15. Mounting the device for optimal view of Road and Driver is essential. If you need additional assistance, please click **Show Me How** for a brief video tutorial.



16. Select your KP2 configuration (Road vs. Road & Driver), and then choose the driver's side of the vehicle.



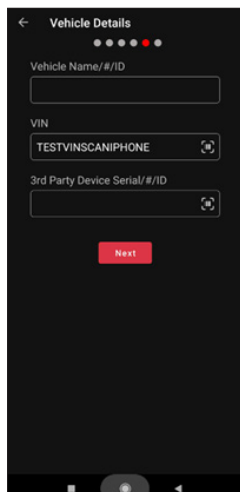
17. Tap **Next** to select your power connection type.



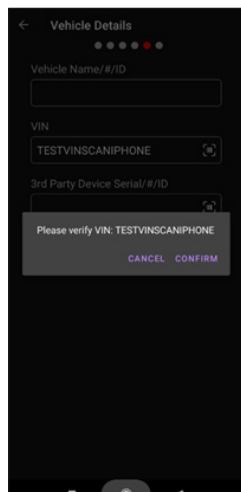
18. Select the power adapter cable you used during installation.



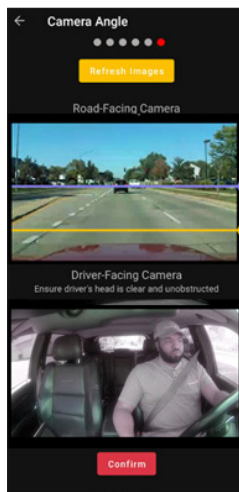
19. To set the "camera height" (from ground), select the picture that is most similar to the vehicle type you are installing KP2 onto. If you prefer to enter a more precise measurement, please choose the Custom option.



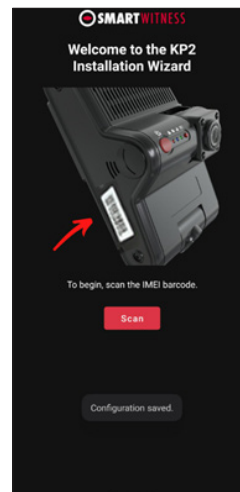
20. Complete the data entry for basic vehicle info, and include the addition tracking device ID if one is present.



21. Ensure the VIN is entered correctly. Tap **CONFIRM** to continue.



22. Review the field-of-view and angle of the Road and Driver cameras. Make physical adjustments as necessary. Tap **CONFIRM** to continue.



23. Completion of the install and settings adjustments will result in a "Success" message back on the home screen. Tap OK and the app is ready to scan the next KP2.

Congratulations! Your KP2 is now ready to go!