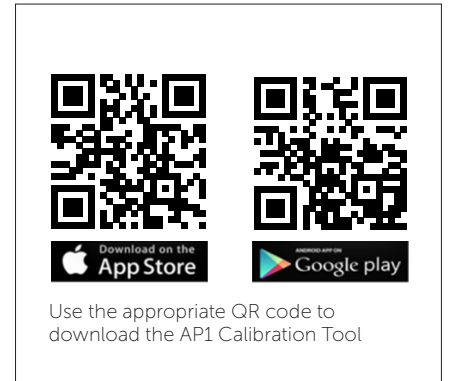
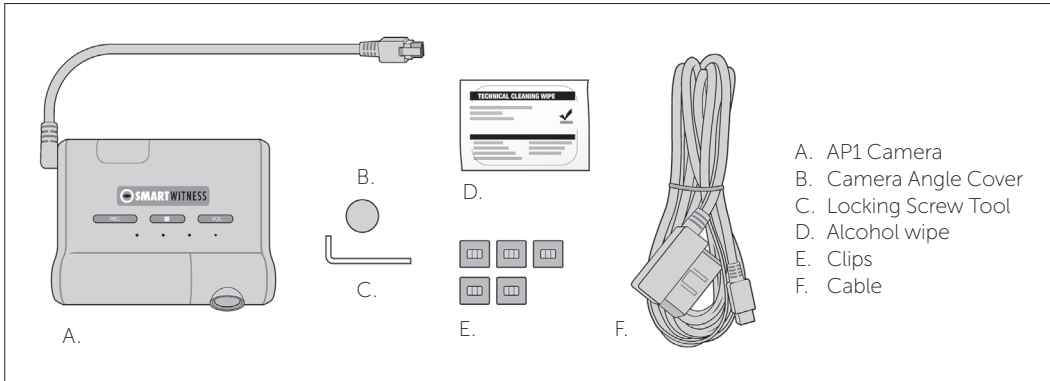


QUICK START INSTALLATION GUIDE

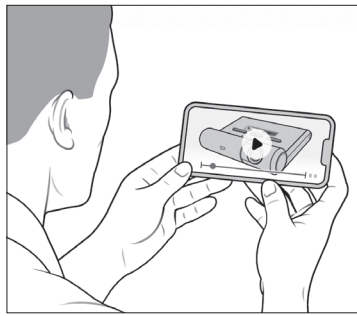
FOR AP1 VIDEO TELEMATICS CAMERA



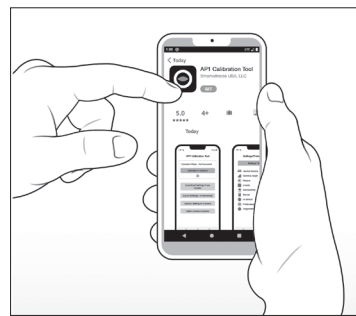
1. Review the package contents.



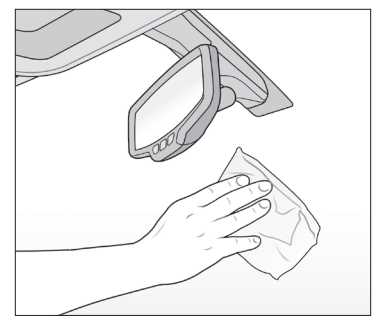
2. Scan the QR code inside the box for a detailed installation video, spec sheet and user guide.



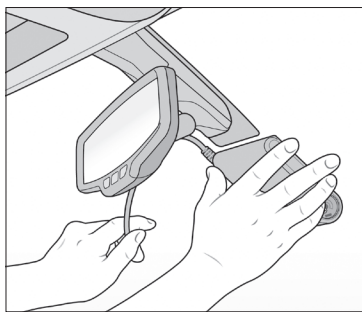
3. Watch the installation video.



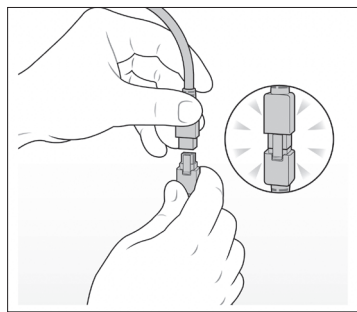
4. Scan the QR code above to find and download the app.



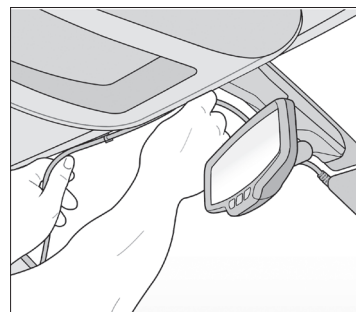
5. Use included wipe on windshield surface. Allow time to dry.



6. Remove backing, then press and hold unit to window for 30 seconds.



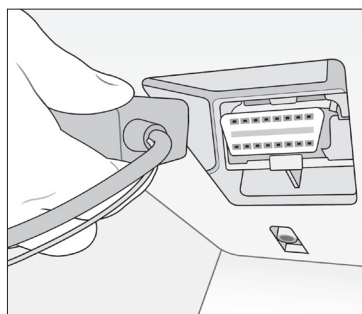
7. Connect AP1 unit wire to main cable harness.



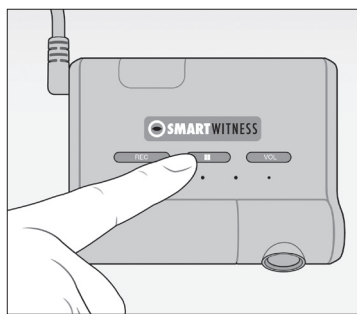
8. Remove adhesive backing on clips, and adhere cable to windshield.



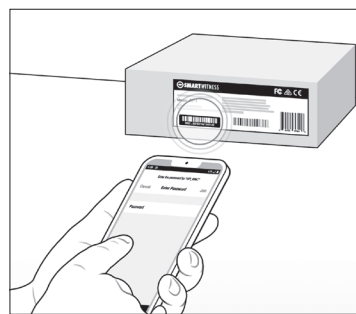
9. Tuck cable behind weather stripping, and push stripping in to secure it.



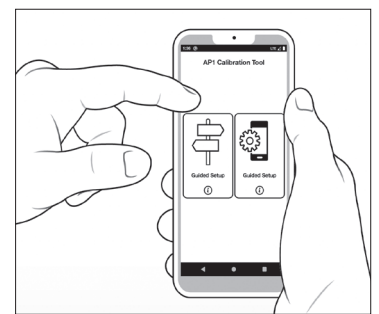
10. Plug main cable into your vehicle's OBDII (or J-BUS) port.



11. Hold center button on AP1 camera unit for 5 seconds. Release button, and wait 3 seconds for blinking orange light.

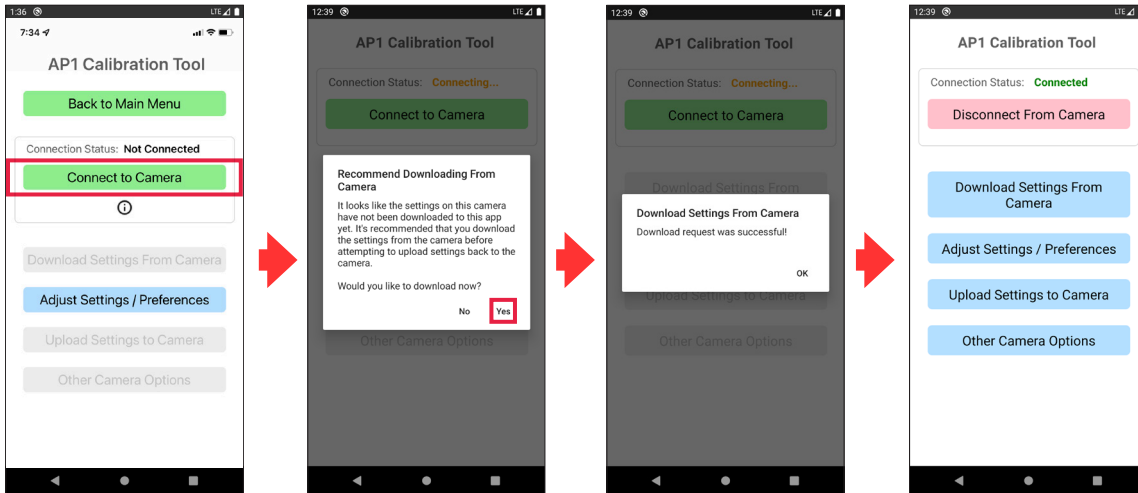


12. Select your device's Wi-Fi settings, choose AP1, and enter the last 8 digits of the IMEI code on the box's sticker.

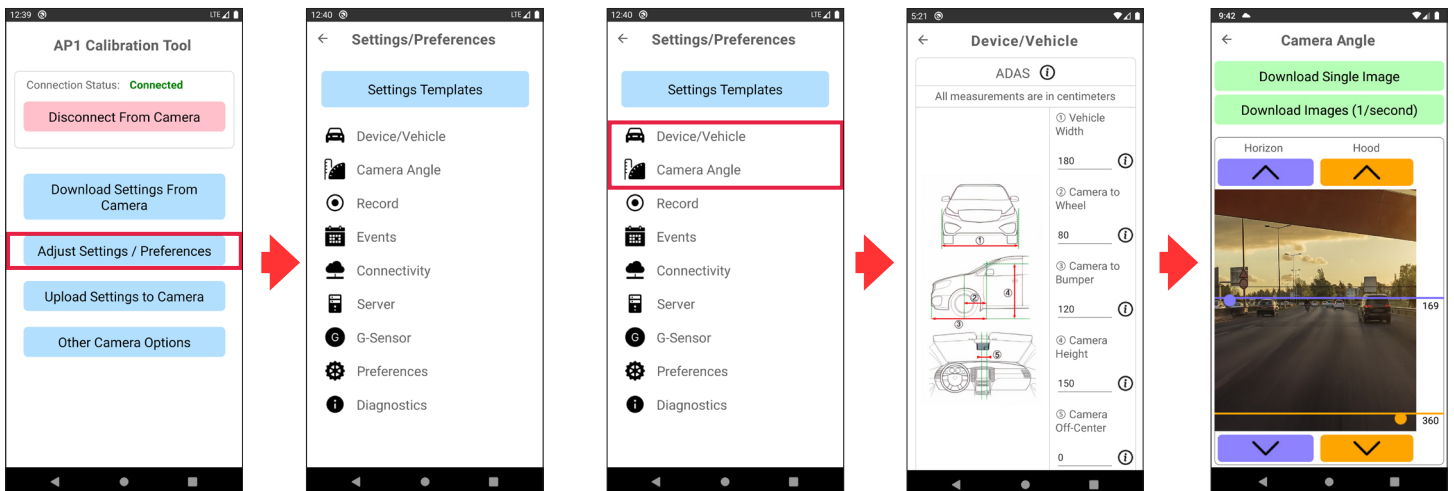


13. Open the AP1 Calibration Tool, and choose the manual option.

Proceed to next page for software calibration >

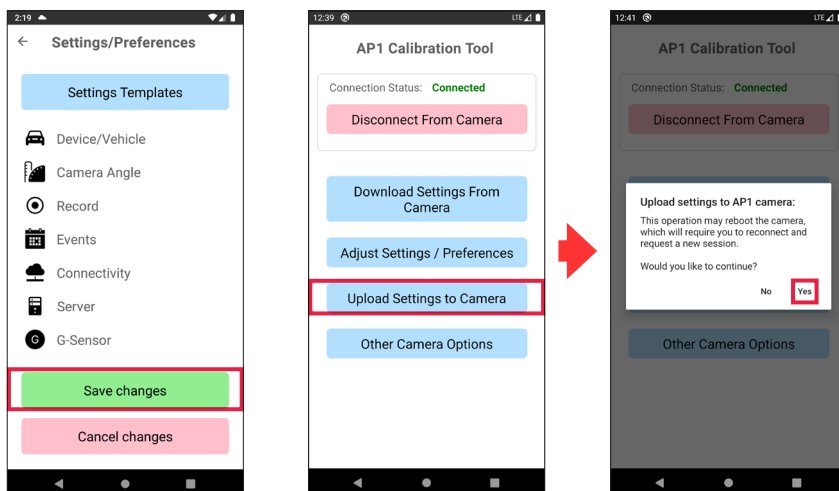


14. Tap the Connect to Camera option. If your device is connected through Wi-Fi to the camera properly, you will see "Connection Status: Connected." When prompted to Download Settings From Camera, tap Yes. If the download was successful, you'll see the Main Menu.



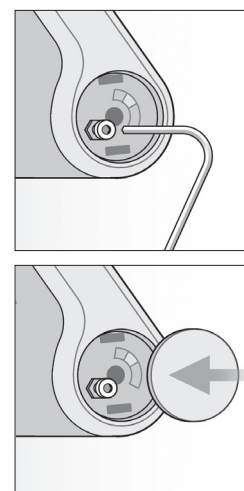
15. Tap the Adjust Settings/Preferences button to open the Settings page.

16. Rotate the camera on the AP1 to adjust its angle. If using ADAS, enter vehicle dimensions within the Device/Vehicle settings, as well as your hood and horizon lines in the Camera Angle settings.



17. Tap Save Changes.

18. Select Upload Settings to Camera from the main page.



19. Tighten the camera angle lock screw, and attach the cover.

Congratulations!
Your AP1 is now ready to go!