



**BLACKVUE**  
CLOUD

# SIM Activation Guide

ENGLISH

[www.blackvue.com](http://www.blackvue.com)

## Prepare before starting

### Find connectivity details

1. Remove the front dashcam from its mount, with the label visible.
2. Connectivity information Label contains:
  - Default Wi-Fi SSID
  - Default Wi-Fi password
  - Cloud code
  - Serial number
  - QR Code



#### **Note**

- Connectivity information label is also included in the dashcam package.

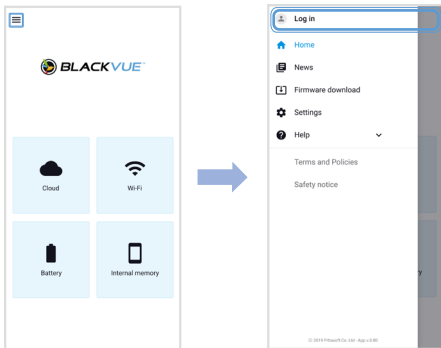
## ▶ How to connect to CLOUD over LTE

### □ Create a BlackVue account

1. Search for the BlackVue app in the Google Play Store or App Store and install it on your smartphone.




2. Open the BlackVue app.
3. Tap menu ≡ in the upper left corner of the home screen.
4. Tap Log in.

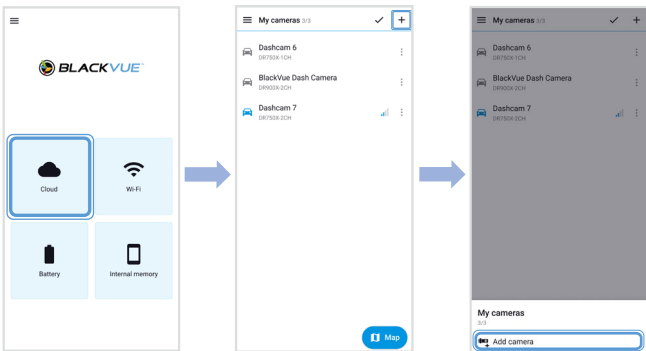


5. Enter your e-mail and password if you have an account, otherwise tap **Sign up** to create an account.
6. Read the Terms & Policies and check the box to agree. Fill out your information and press **Sign up** to continue.
7. Check your e-mail for the confirmation link from Pittasoft. Click the link to confirm your e-mail address. Your BlackVue account setup is now complete.

The image shows two mobile application screens side-by-side, connected by a blue arrow pointing from left to right. The left screen is titled "Log in" and features a close button (X) in the top left corner. It contains two input fields: "Email" and "Password" (with an eye icon for visibility). Below these is a blue "Log in" button. At the bottom, there is a link "Don't have an account? Sign up" and a link "Forgot password?". The right screen is titled "Sign up" and also has a close button (X) in the top left corner. It contains four input fields: "First name", "Last name", "Email", and "Create password" (with an eye icon). Below these is a blue "Sign up" button. At the bottom, there is a link "Already have an account? Log in" and a checked checkbox next to the text "I agree to the Terms of Service, Privacy Policy, Information We Collect and Why and Terms of Location-Based Service Use."

## Register your dashcam to your account

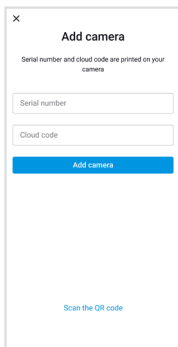
1. In the BlackVue app, select **Cloud** and login to your account.
2. Press + and then select  Add camera
3. Tap **Yes** to receive push notification (this setting can be adjusted at any time later).



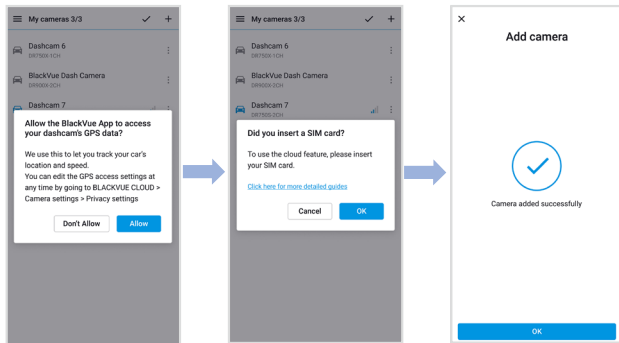
4. Register your camera using one of the following methods (Check connectivity details).

**Scan the QR code:** **Scan QR Code** and line up the QR Code on your smartphone screen.

**Add camera manually:** Enter your **camera's Serial number, Cloud code** and press **Add camera**.



- The app will ask for your permission to access your dashcam's GPS data.  
If you **allow** access the app will be able to show your dashcam's location and speed.  
If you **don't allow** access you won't be able to see your dashcam's location and speed (you can allow access later in **Privacy settings**).
- To use the Cloud service, the app will ask if you inserted a SIM card.
- Once all done, your dashcam registration is complete.



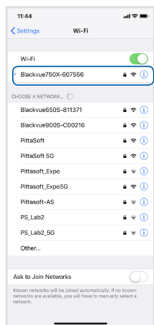
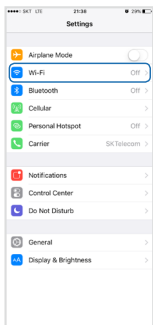
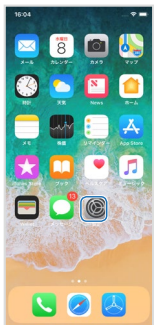
## ▶ SIM activation process

### Note

- To activate SIM, your SIM card must be inserted into your BlackVue LTE device. For details on how to insert your SIM, refer to the guide included in your LTE device package.

### A. Connect to your dashcam via Wi-Fi direct

1. Wi-Fi direct will automatically turn on once you plug in power to start your dashcam.
2. "Pair" your smartphone with the BlackVue dashcam via Wi-Fi direct. If you want to disconnect Wi-Fi direct, please press Wi-Fi button and vice versa.
3. Go to your smartphone's settings then select Wi-Fi, and make sure Wi-Fi is turned on. Choose your BlackVue dashcam from the network list. The dashcam's default SSID begins with its model number (e.g. BlackVue \*\*\*\*\*).
4. Enter the password and tap join. The default Wi-Fi SSID and password are printed on the dashcam's label. (Check connectivity details).



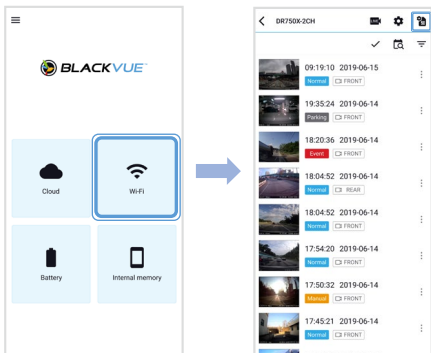



## B. Activate your SIM card

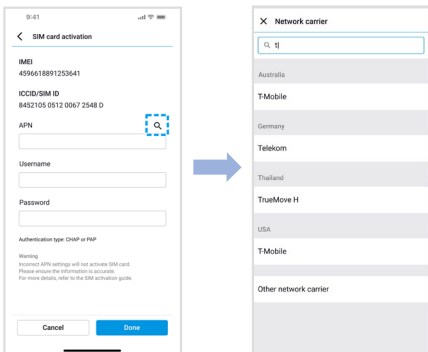
1. Open the BlackVue app and select **Wi-Fi** → SIM card activation 

### Note

- SIM card activation after parking mode may require 20 seconds to retrieve SIM information.
- You can purchase a SIM card from a local carrier's offline store or online website.



- In order to set APN automatically, click  icon to get the network carrier list. If you select your network carrier, APN setting information will auto-fill in the SIM card activation page.
- If there is no network carrier that you want to use in the network carrier page, please select "Other network carrier". You can manually set APN by filling in the APN information.



Once the settings are saved, the dashcam should connect to Cloud within few seconds. If dashcam fails to connect to Cloud, please check the APN settings or contact customer support.

Now you can go to BlackVue app > Cloud and start using Cloud service features such as Remote Live View and Video Playback, Real-time Location, Auto-upload, Remote Firmware Update, and etc.



## Note

- If your SIM card is PIN or PUK locked, enter its code as provided in your SIM card package.

### WARNING:

- Three consecutive incorrect password attempts may engage PUK mode.
- Ten consecutive incorrect PUK code attempts may block SIM card. If you require assistance, please contact the network carrier.

< SIM card activation  
 Network carrier  
 KDDI(au)  
 ICCID / SIM ID  
 8452105 0512 0067 2548 D  
 PIN code  
  
 Warning  
 3 failed PIN code attempts may result in PUK mode  
 Cancel Next

< SIM card activation  
 Network carrier  
 KDDI(au)  
 ICCID / SIM ID  
 8452105 0512 0067 2548 D  
 PUK code  
  
 Create new PIN code  
  
 Warning  
 10 failed PUK code attempts may block SIM card. For assistance, please contact your network carrier.  
 Cancel Next

- Incorrect APN setting or non-suggested carrier's APN setting may lead to failure to connect to LTE network.
- Some Cloud features may not work when surrounding temperature is high and/or LTE speed is slow.
- For detailed information regarding BlackVue Cloud Service, please visit our website ([www.blackvue.com](http://www.blackvue.com)).

- Information in the guide may be different depending on language.
- All information, representations, links or other messages may be changed by Pittasoft at any time without prior notice or explanation to the user.

